

MEMORANDUM

TO: Steve Davies - Credit Valley Conservation **DATE:** July 2, 2002
FR: George Schneider, GAL - Mississauga **JOB NO:** 021-1221
**RE: PRELIMINARY GEOPHYSICAL LOGS FOR BOREHOLE CVC-ORM1
WARWICK PROPERTY**

Pleased see attached preliminary geophysical logs for the borehole CVC-ORM1. The depth reference is ground surface. I've done a preliminary correlation to the borehole summary log you provided, your well installation details and the moisture content data, but I didn't want to send it as a WIP, but rather wait until it is completed and checked. I trust these preliminary plots will meet your needs for now.

I'm away in the field this week on Tuesday and Wednesday and we're moving our office to a new building on Argentia Road later this week. I'll complete your report the following week. Hope that is okay.

One thing that would help from your end would be if you could provide us with a more readable copy of your field logs etc. or even better, a "good copy" (presumably you will be rewriting them or having them drafted up). The fax copy is hard to read, particularly some of the depths. When we write this up, I want to make sure we get it right the first time around.

I'll call you next week when the move is done and give you an update.

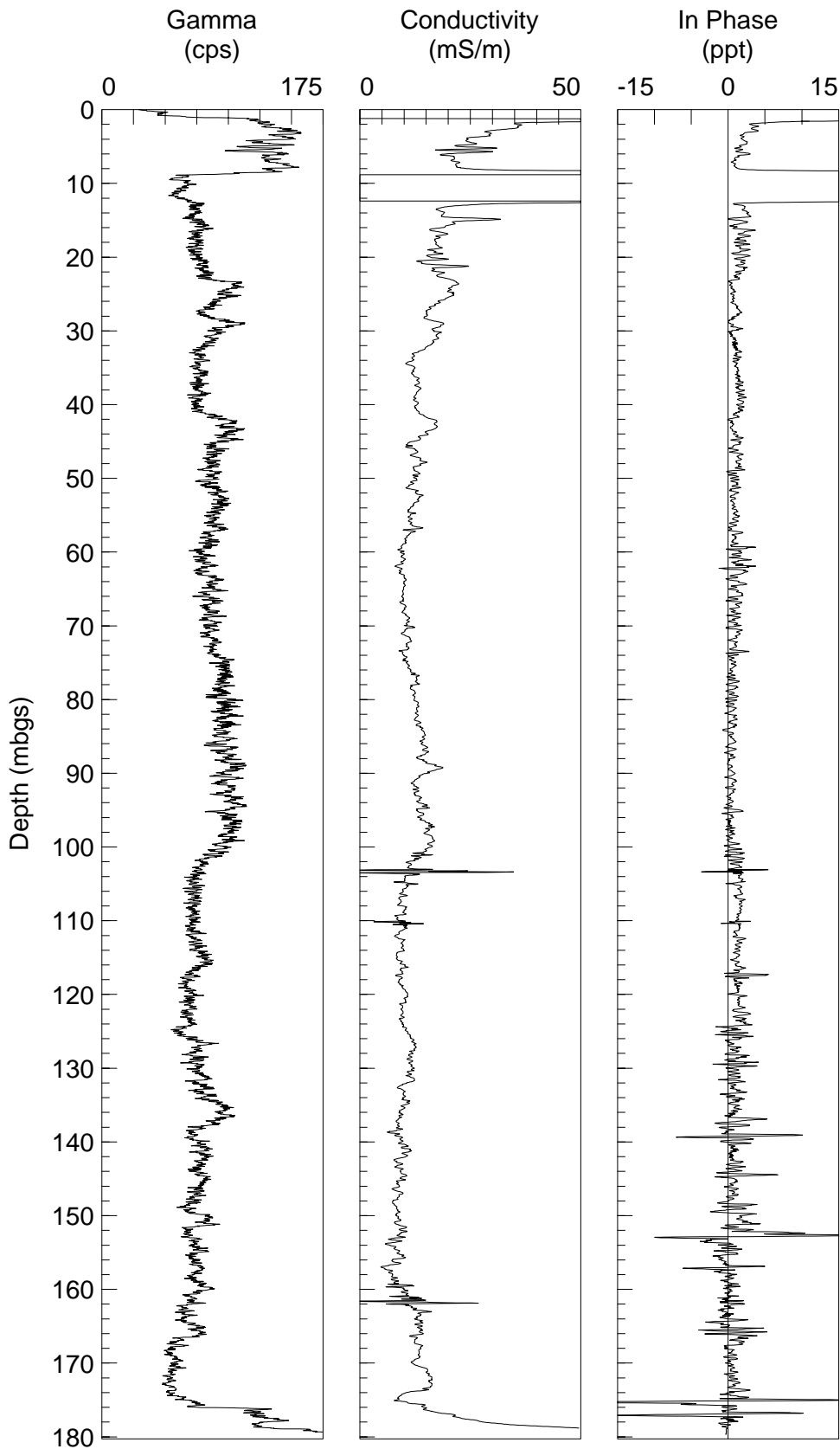
GWS/gws

Attachments: Figure 1

c:\gws-work\021-1221 cvca logging\july2-to-cvc\021-1221-prelim-logs-july 2.doc

PRELIMINARY GEOPHYSICAL LOG
CVC-ORM1 (WARWICK)
LOGGED JUNE 26, 2002

FIGURE 1



Date July...2002.....
Project Q21...1221.....

Golder Associates

Drawn..GWS.....
Chkd ..MMW.....